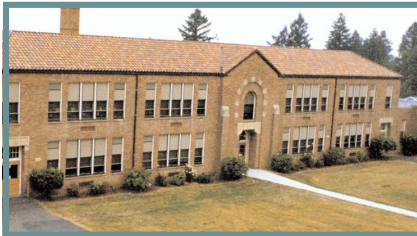




RIGLER

ACCESSIBILITY SUMMARY

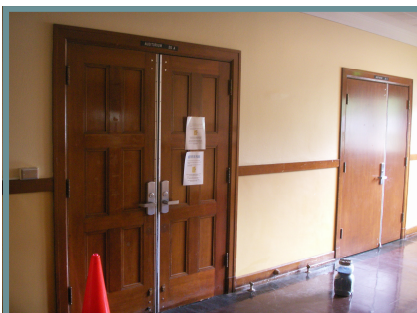


Rigler School
5401 NE Prescott Street
Portland, OR 97218

SUMMARY

Some common areas at Rigler are located on the ground floor, but the cafeteria is on the inaccessible basement level. Priority should be given to providing an elevator for access to basement cafeteria and basement and second floor classrooms at this school. The elevator, lift, ramp, door hardware and plumbing on floors other than the main level comprise the majority of the upgrade work. The major accessibility upgrades for Rigler are summarized on this sheet.

These two pairs of doors at Rigler are a good example which illustrates a solution to replace two 30-inch inaccessible doors with an accessible unequal pair of 36-inch/24-inch doors.



Non-compliant/Compliant Doors

ACCESSIBILITY UPGRADES TO MEET 2008 ADA GUIDELINES

Site Elements	Accessible handrails at sloped path/ramp Accessible ramp at portable classrooms
Accessible Route & Reach Ranges	Elevator to access the basement and second floor Lift for stage access Classroom lever door hardware Accessible handrails at one interior full height staircase
Plumbing Elements	Accessible boys and girls restrooms at second floor Accessible drinking fountains basement and second floors Accessible locker rooms Accessible sink
Communication Elements	Assisted listening devices at auditorium Additional exterior parking and directional signage Signage
Special Spaces	Wheelchair and companion seating
Built-In Elements	Accessible benches
Recreational Facilities	Accessible play area soft surfacing & structure

COST BREAKDOWN

Cost information provided is based on 2009 estimated unit costs for direct construction including general contractor overhead. Additionally, estimated hard costs and soft costs provided by PPS have been included.

Site Elements	\$124,650
Accessible Route & Reach Ranges	\$603,230
Plumbing Elements	\$71,013
Communication Elements	\$11,957
Special Spaces	\$3,273
Built-In Elements	\$98,492
Recreational Facilities	\$21,810
Special Education	\$0
Total	\$931,153